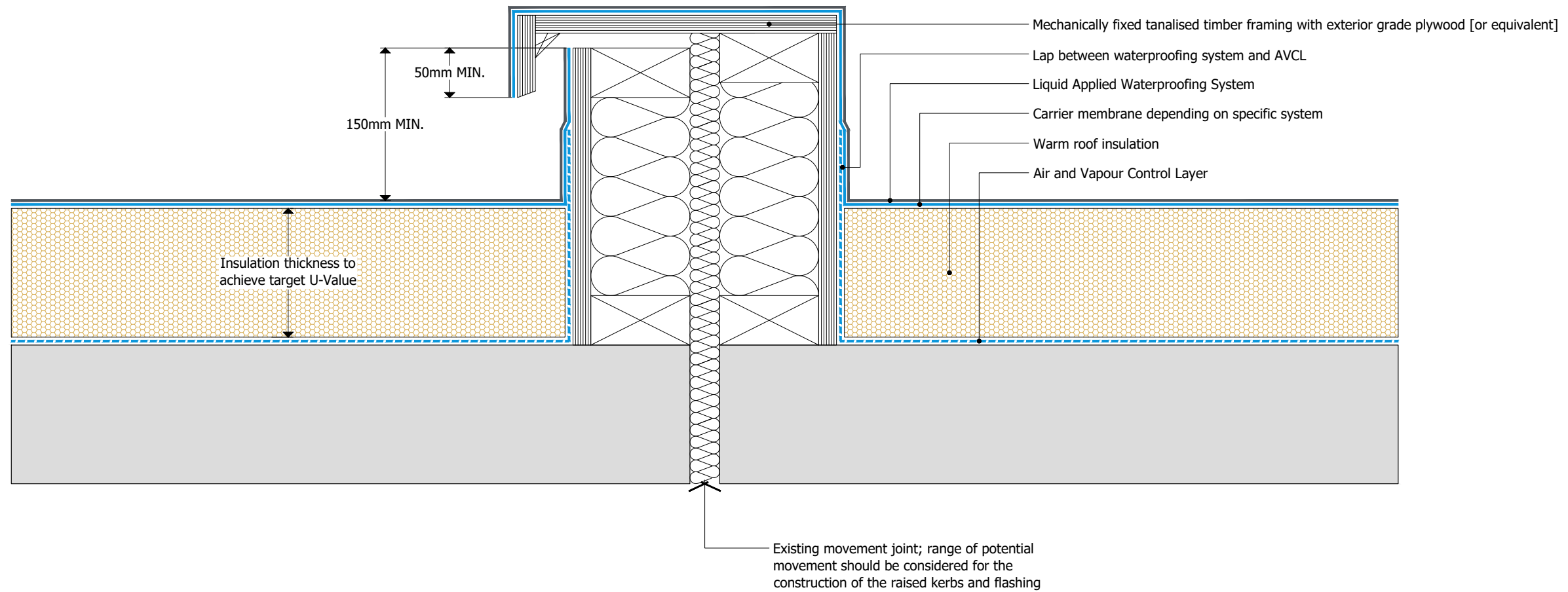


General Notes

- ① Indicative typical detail; please refer to system manufacturer for specific variations
- ② Typical warm roof shown
- ③ Proprietary hard edge profiles used where required to protect exposed insulation corners - *not shown*
- ④ Termination of the waterproofing could be finished with a suitable profile trim - *not shown*
- ⑤ Pre-formed angle fillets are optional for use at horizontal and vertical abutments - *not shown*



Drawing Status: **FOR INFORMATION**

DWG N° 002 Revision

Drawing Title:  
Typical Warm Roof Installation  
Typical Movement Joint  
With Raised Kerbs

Scale: NTS @ A3 Drawn: LRWA

Date: August 2020

This drawing is the confidential property of the Liquid Roof Waterproofing Association. All rights in respect of patents, design and copyrights are reserved. Moreover it is solely intended to illustrate the current best practice installation of the secondary roof components only, and must be read in conjunction with appropriate system specification and current issue of relevant Product Data Sheets. Elements bearing reference to structural and/or thermal design are shown indicatively and should not be used for any aspect of project design without consulting the relevant authorities.